



**MODEL NO. - ACM-1212FH**

# FUME HOOD

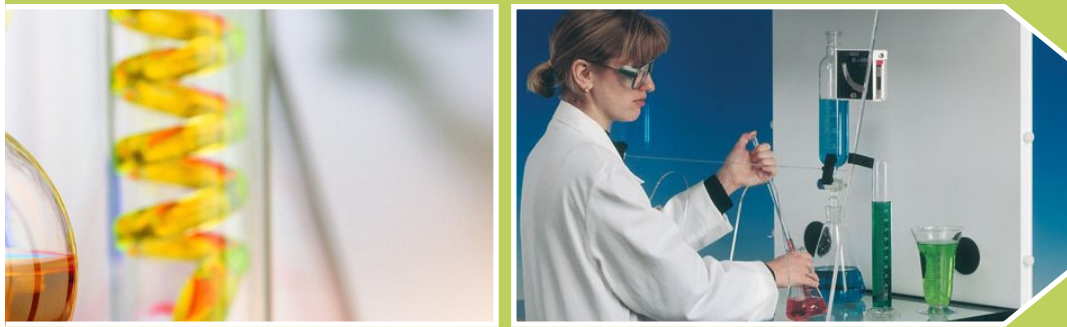


## FUME HOOD

**Fume hoods** are equipments that are used to ensure safety for the user who works with these equipments as they won't be exposed to too many hazardous and dangerous fumes. This can be mainly done by keeping the air inside the fume hood, which can be away from the user who is conducting experiments. Weiber is counted amongst the leading manufacturers/distributors/suppliers/developers/exporters/engineers/service providers of microprocessor based laboratory testing fume hoods in India for both laboratory and industrial application. A propylene fume hood is used to handle toxins and hazardous chemical fumes and effluents. Weiber advanced fume hood design offers unmatched prices, specifications and usages for biotechnology and other laboratories. Weiber specializes in both standard and customized chemical fume hoods.

## CONSTRUCTION DETAILS

Fume hoods are developed and designed to be used as semi conductor ventilated enclosures so as to protect the user from harmful and toxic fumes and vapors and to eliminate the possibility of accidental fire which may lead to emission of inflammable gases during the course of experiments. Hence, the



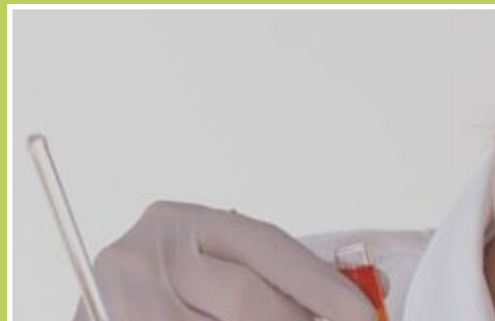
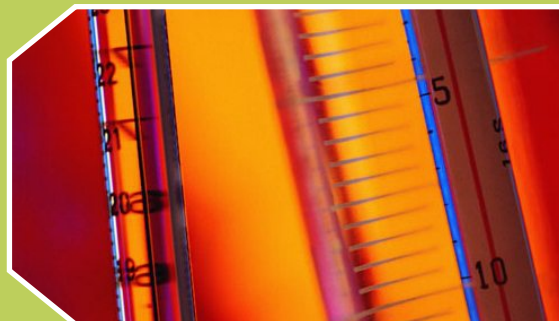
materials of fume hoods are carefully chosen between industrial grades fire resistant commercial wooden boards covered with laminated sheets and lined completely with epoxy coating/FRP lining or corrosion resistant steel sheets having epoxy coating from inside, duly painted with attractive stove enamel/drying spray paint. The work table is made of heavy gauge construction material fortified with acid proof glazed tiles/stainless steel grade ss-304 grade. The work bench is provided with a small made of stainless steel ss-304 grade. All modular fume hoods are provided with sliding sash made of special grade shatter proof glass duly framed in wooden/ aluminum frame with sliding motion and counter weight balanced mechanism.

## VOLUME OF EXHAUST

It is generally known that fume hoods are capable of maintaining a constant exhaust volume.

## TESTING PROCEDURES OF CONTAINMENT

Fume hoods are specifically to decrease the loss of static pressure at a given baffle opening position. According to the standard procedures the average loss of static pressure at any given four points at



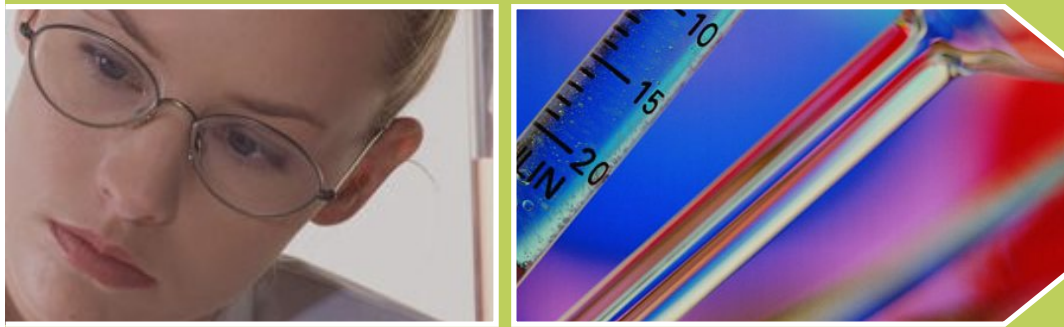
ninety degree and 3 duct dia from the fume hood, that will not exceed 75 feet per minute at 0.25 inch, with full slash opening and face velocity of 100 feet per minute.

## NOISE AND **SOUND LEVELS**

Our stainless steel fume hoods are designed with lower noise levels and the performance of these fume hoods are comparatively better than the industry standards of 60db, and approximately 15cm distance from the sash.

## ILLUMINATION LEVELS AT **WORK SPACE**

Our automatic fume hoods make sure that a maximum of 800 lux light is available on the work table through diffuser fluorescent light arrangement.



## EXHAUST ASSEMBLY

These fume hoods are incorporated with an extremely durable and strong exhaust system that generally persists a range of 500-1250 CM. These exhaust assembly comprises of balanced centrifugal impellers that are combined with a heavy duty three phase motor of Crompton greaves.

## EXHAUST DUCTING

These fume hoods are also integrated with a FRP ducting of required dimension as per the requirements of the user.

## FEATURES

- Ergonomic design
- Low noise levels energy efficient mechanism
- Conforms to ASHRAE-110-1995
- CE marked and NABL & NSF certified
- Floor standing & epoxy coated



## TECHNICAL MATRIX: **FUME HOOD**

Constructions	Mild Steel / SS-304
Table	Stainless steel sheet table of ss-304 grade/ fortified acid proof glazed tiles
Sink	Stainless steel sink with tap
Coating	Epoxy coating
Air flow	Unidirectional
Air flow control	Three step air flow speed controller
Blower assembly	Centrifugal lubricated bearing type ISI marked assembly
Illumination	Fluorescent light illumination greater than 800 lux on work table
Noise level	Noise level less than 60 db
Power requirements	500 watts -750 watts( model specific)
Nominal voltage	220- 230 volts, 50Hz single phase
Frequency	50



# WORKING SIZES

4' x 2' x 2'
5' x 2' x 2'
6' x 2' x 2'
7' x 3' x 3'
8' x 3' x 3'

**Note:** We undertake to manufacture customized fume hood sizes as per the specific requirements.



An ISO 9001 : 2208 | ISO 14001 : 2008 | ISO 13485  
WHO: GMP Products | GLP Compliant Products

[www.acmasindia.com](http://www.acmasindia.com) | [www.cleanroom-equipments.com](http://www.cleanroom-equipments.com) | [www.test-chambers.com](http://www.test-chambers.com)

## **ACMAS** TECHNOLOGIES PVT. LTD.

### **CORPORATE OFFICE/ SHOWROOM (INDIA)**

Plot No. 352-353, Sector – 57  
Phase- IV Kundli, Sonapat, HR 131028  
Land Line No.: +91 - 11- 47619688,  
Fax: +91-11-47619788  
E-mail.: [info@acmasindia.com](mailto:info@acmasindia.com)

### **SALES OFFICE (HONG KONG)**

Unit D 28 11/F Wing Tat Comm,Bidg 97, Bonham Strand East,  
Sheung Wan, Hong Kong (PRC)  
Tel.: 0086-13929598046 I 0086- 18922303099  
E-mail.: [hk@acmasindia.com](mailto:hk@acmasindia.com)

### **SALES OFFICE (RUSSIA)**

Inmed Trade Street Ozerkovsky Embankment,  
Unit No 50, Straine- 1, Off- 502, Moscow, Russia  
E-mail.: [info@acmasindia.com](mailto:info@acmasindia.com)  
Tel.: 0049- 79592345 | Email: [russia@acmasindia.com](mailto:russia@acmasindia.com)