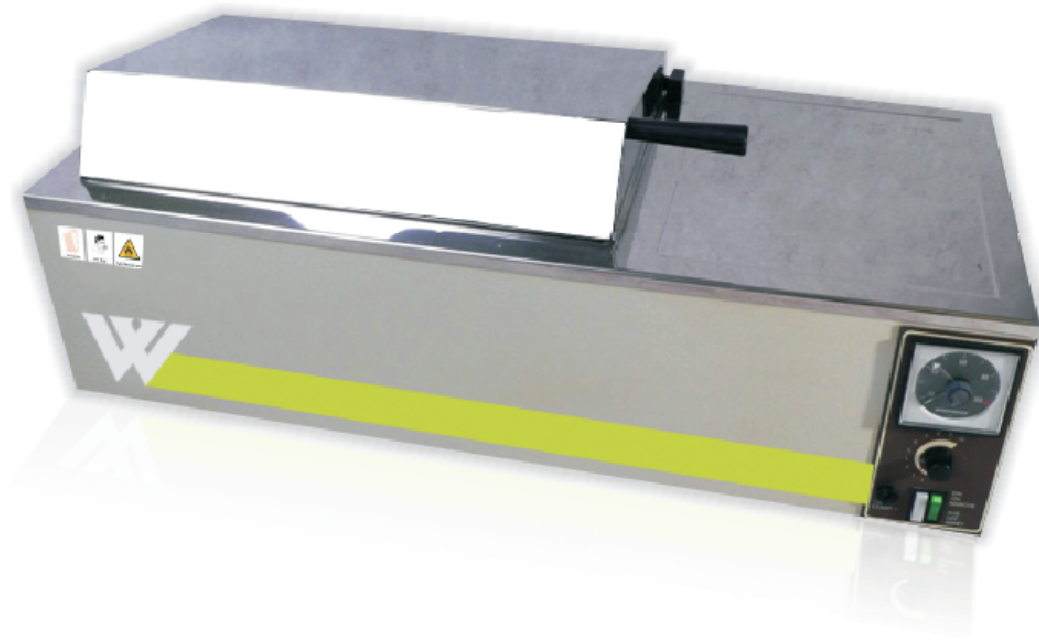


Serological Water Bath

Models:

- ABX-Series

Serological Water Bath



WEIBER

This bath is suitable for Wasserman, Kolmer & Kahn test inactivation's, paraffin Embedding & many other application in the Laboratories, Hospital & Industries. Serological Water bath is double walled outer body made of mild steel sheet painted with attractive Epoxy coated & inside chamber made of stainless steel . The gap between the walls is filled with glass wool to minimize the loss of temperature. The serological water bath is provided with a S.S. drain plug to facilitate easy emptying & cleaning of the inner chamber when ever necessary. Bath consist dome cover & perforated removable shelf.

Serological Water Bath

We specialize in both standard and customized models, specifically designed to meet the challenging demands of various scientists for individual and specialized research applications. Over a short period of time Weiber brand have been established as reliable exporters of Water bath in India, catering to the vast markets in South East Asia, Middle East, Africa and Europe.

Serological Water Bath



Serological Water Bath

We are manufacturers of water bath in India since 1990. Our water baths are widely used for day to day bacteriological and varied laboratory applications requiring incubation as well as general tests and procedures in variety of research and testing laboratories. Apart from that, these water baths have a variety of usages in tissue culture applications, enzyme reaction studies, growth observation studies, fermentation analysis and various other general and specialized applications in various laboratories.

Construction Details Water bath

Our water baths are double walled convection heated units. Outer body of our water baths are constructed out of thick PCRC steel sheet, duly pre-treated with primers for rust proofing and painted with air drying paint/stove enamel/powder coating. The inside chamber of the unit is made of heavy gauge stainless steel sheet of grade ss-304. The unit is provided with top opening cover, made of stainless steel with steel concentric rings. The unit is provided with one stainless steel rack to hold six/twelve flasks.

Serological Water Bath**Serological Water Bath**

Apart from that we are supplying our water bath in India, catering to a variety of customers ranging from Defence Installations, Research Laboratories, Educational Institutes and various R& D laboratories of leading national and multinational companies.

Salient Features

1. Versatile usage
2. Ergonomic Design
3. Energy Efficient
4. Long life
5. Low Maintenance
6. Calibration And Protocol Documentation

Temperature Range

Temperature range of our standard water bath models are 5o c above ambient to 90o c. However we have the capacity to modify the same to suit the individual specialized requirements of our customers.

Serological Water Bath**Serological** Water Bath**Heating**

Indirect heating system is provided in our water bath, comprising of air heaters made of high grade Kanthal A-1 wires of suitable wattage.. The temperature is evenly distributed throughout the chamber through natural water convection mechanism, ensuring a very good temperature sensitivity.

Serological Water Bath

Temperature Sensitivity

Temperature inside our water bath is controlled with a sensitivity of ± 0.50 c or better.(With PID Controller)

Front Panel

Front panel of our water bath comprises of on/off switches heating and mains indicator lamps and temperature controller.

Technical Matrix For Water bath

Temperature Control	
Temperature Sensitivity	\pm °C 0.5 or better
Spatial Deviation In Temperature	\pm °C 0.5 or better
Readability	°C 0.1
Temperature range	°C 5°C above ambient to 90°C (Standard)
Temperature Sensor	PT-100
Temperature Controller	Solid State digital Controller/PID optional
Display	LED/LCD
Adjustable alarm limits	Optional With PID controller only.
Safety thermostats	
Temperature variation Adjustments	3 (With PID Controllers only)
Temperature Sensors	PT-100
Automatic temperature setting	Yes (With PID Controllers only)
Adjustable limits	Yes (With PID Controllers only)
Accessories	
Timer (999 mins)	optional
Program (Real Time)	optional
Data Acquisition Program	optional
Serial Port (Printer)	RS232C optional
Inspection window in door	optional
Shelves	
Standard	(2) (4) (6) (8)
Internal Dimensions	mm Standard
Accessories	
Printer Report Program	optional
2 x 24 characters LCD Display	optional
Access Port 30 mm	optional
Power consumption	
Nominal power	W 500 -650
Nominal voltage	V 220-230 Volts, 50 Hz Single Phase
Frequency	Hz 50

WIDTH x HEIGHTx DEPTH (Size Inside Chamber)

- (a) 300x250x175 mm (for 2 racks)
- (b) 330x300x175 mm (for 4 racks)
- (C) 455x300x175 mm (for 6 racks)
- (d) 605x300x175 mm (for 8 racks)



We are having **Representatives in 55 Countries**

please visit our

International Dealers Section

to contact your nearest **ACMAS** Representative



TECHNOLOGY with **HUMAN TOUCH**

Serological Water Bath



An ISO 9001:2208 | ISO 14001:2008 | ISO 13485
WHO:GMP Products | GLP Compliant Products

www.acmasindia.com | www.scientificlaboratoryequipments.com | www.measuring-meters.com

ACMAS TECHNOCRACY PVT. LTD.

SALES OFFICE (INDIA)

312-313, Yardhman Capital Mall, L.S.C. 10, GulabiBagh, Delhi-110052, INDIA

Tel: 0091-11-23646703, 23643054

(M) +91-9313971681 | Email: india@acmasindia.com

SALES OFFICE (HONG KONG)

Unit D 28 11/f Wing Tat Comm, Bldg 97, Bonham Strand East, Sheung Wan, HONG KONG (PRC).

Tel: 0086-13929598046 | 0086-18922303099

Email: hk@acmasindia.com

SHOWROOM

141, Rai Industrial Estate, Rai, Sonapat, Haryana-131029, INDIA

Tel: 0091-0-9312219738 (M) +91-9717741167

Email: info@acmasindia.com

SALES OFFICE (RUSSIA)

Inmed Trade Street, Ozerkovsky Embankment, Unit No 50 Straine-1, Off-502, Moscow, RUSSIA

Tel: 0049-79592345 | Email: russia@acmasindia.com