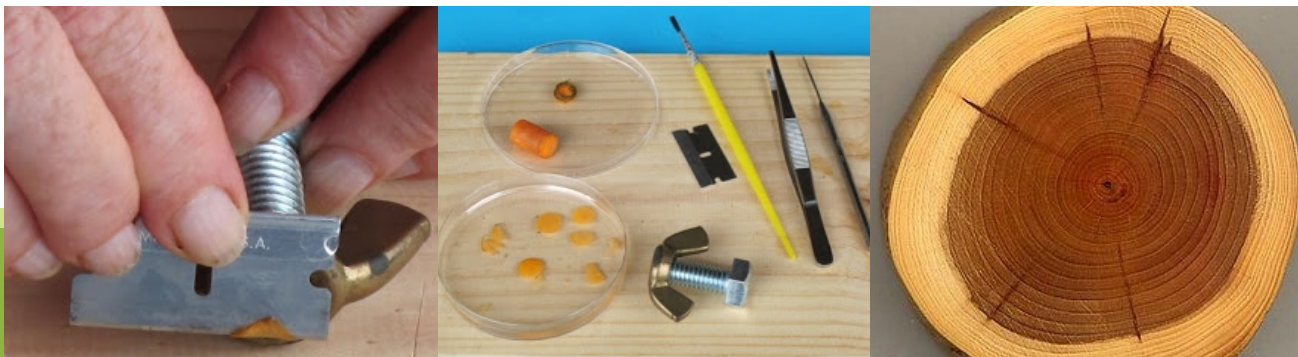




WOOD **MICROTOME**

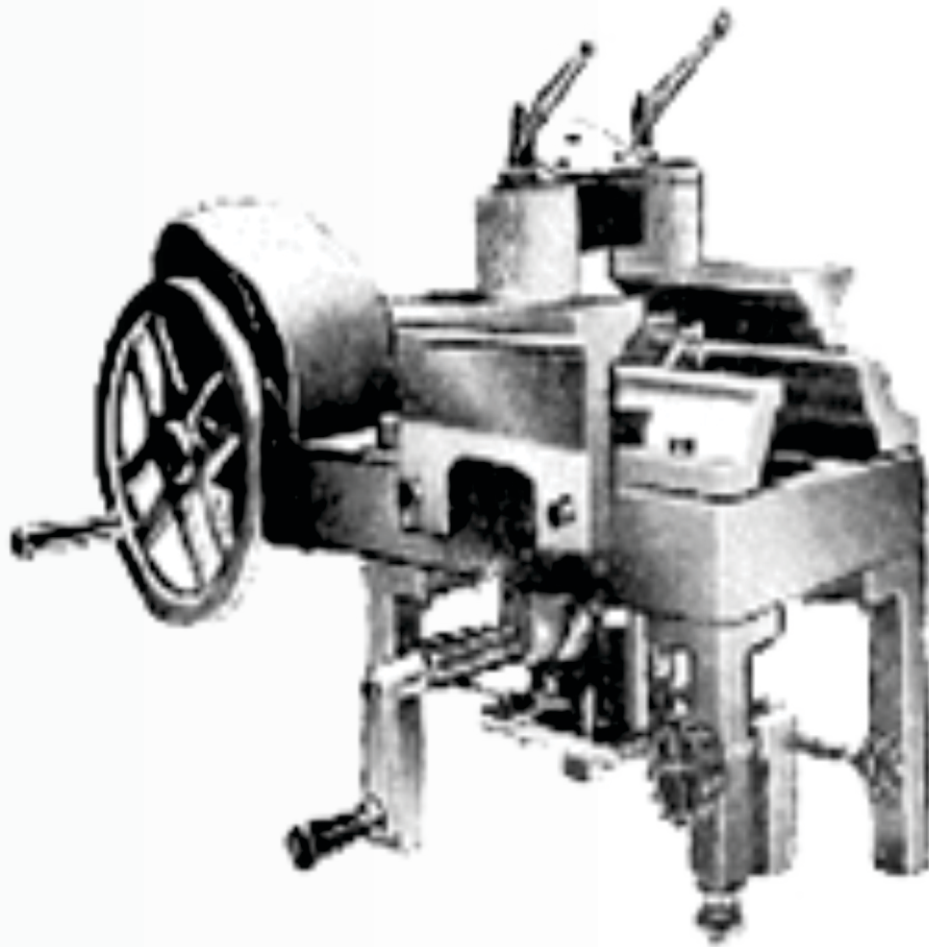
Model No. : ACM-92307-J





WOOD MICROTOME

Model no. : ACM-92307-J



WOOD MICROTOME

Model no. : ACM-92307-J

Heavy duty wood microtome, jung German Type for cutting sections of plastic moulds, wood and other hard specimens. Its features includes: Performance, Versatility and Ergonomics. Designed for medical, biological and industrial applications, the Acm 92307-J Wood Microtome is a universal instrument for a variety of applications in all laboratories where paraffin, tissue, or wood are sectioned. Its sturdy construction gives it qualities that ensure excellent, reproducible sectioning results. Ergonomic design and outstanding safety standards such as a sledge locking device, knife guard and easy access to the sample are the outstanding features of the Acm 92307-J Wood Microtome that ensure trouble free and convenient operation.

Sturdy construction, Section thickness range 1 to 40 μm .

Maximum specimen size 90 x 130 mm.

High-precision specimen feed

Robust knife holder

Knife inclination and declination adjustable Specimen orientation



An ISO 9001 : 2208 | ISO 14001 : 2008 | ISO 13485
WHO: GMP Products | GLP Compliant Products

www.acmasindia.com | www.acmasglobal.com | www.test-chambers.com

ACMAS TECHNOLOGIES PVT. LTD.

CORPORATE OFFICE/ SHOWROOM (INDIA)

Plot No. 352-353, Sector – 57
Phase- IV Kundli, Sonapat, Haryana - 131028
Land Line No.: +91 - 11- 47619688,
Fax: +91-11-47619788
E-mail.: info@acmasindia.com

SALES OFFICE (HONG KONG)

Unit D 28 11/F Wing Tat Comm,Bidg 97, Bonham Strand East,
Sheung Wan, Hong Kong (PRC)
Tel.: 0086-13929598046 | 0086- 18922303099
E-mail.: hk@acmasindia.com

SALES OFFICE (RUSSIA)

Inmed Trade Street Ozerkovsky Embankment,
Unit No 50, Straine- 1, Off- 502, Moscow, Russia
E-mail.: info@acmasindia.com
Tel.: 0049- 79592345 | Email: russia@acmasindia.com