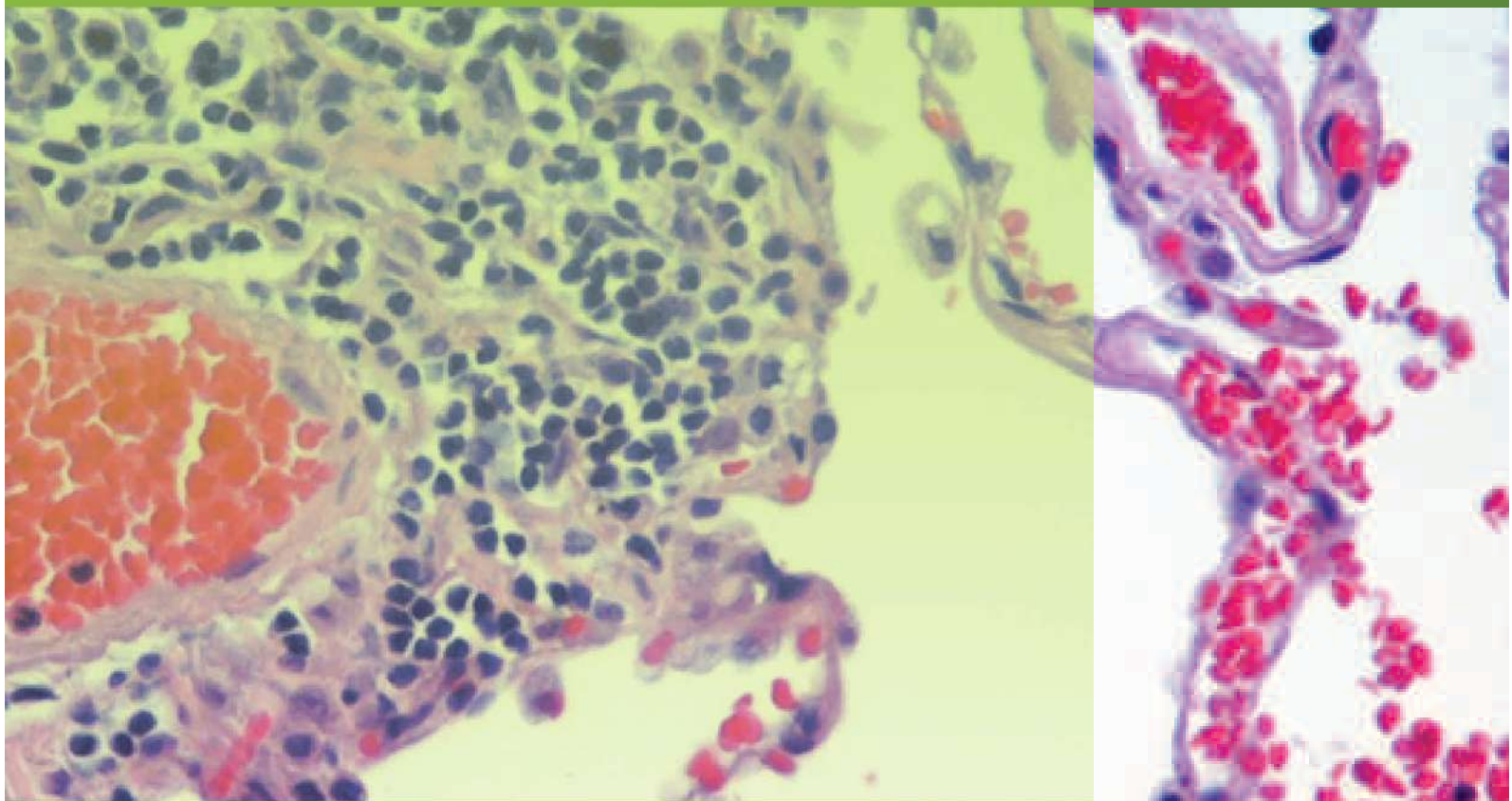




# PRECISION **MICROTOME**

Model no. : ACM-92304-J





# PRECISION MICROTOME

**Model no. : ACM-92304-J**

Weiber Senior precision rotary microtome is as per Spence A.O. 820 and is the most advanced sectioning equipment for medical colleges, universities, research laboratories, hospitals and educational institutions. The internal mechanism and knife holder rest on a heavy and rigid base to render a shake proof operation. The latest designed protective cover is hinged to the base and swings back so that the interior parts will be completely exposed for convenient cleaning, lubrication & setting etc the feed mechanism is dependent on the vertical movement of the object block. With every complete revolution of the counter balanced drive wheel the feed pawl engages precisely on to the teeth of the ratchet gear which moves towards and advances the object holder through a cone, inclined plane mechanism in such a precise increments that tissues can be sectioned even in one micron thickness. When the limit of the feed is reached at the end, a safety device automatically disengages the feed mechanism to prevent jamming and damage to the feed screws.

The feed indicator is located in the front and feed setting is controlled by a knurled knob at the back of the microtome, to adjust section thickness from 1 50 microns in steps of one microns each. The sturdy knife holder in addition to knife elevating and leveling provides lateral movements for complete use of knife edge.

The angle adjustable up to 300 is indicated on a reference scale. The knife supplied with the microtome is fabricated from high carbon fine grain tool steel which is heat treated for proper temper and tested for micro structures. It is furnished in attractive hammer tone finish and is packed with following accessories in a wooden case along with operating manual.



## TECHNICAL SPECIFICATIONS

Section settings and adjustments	
Section thickness indication	visual display
Range of section thickness	1 - 50µm
Increments	from 1-10µm in 1µm steps.
Specimen Movements	
Total Horizontal specimen feed	28 mm
Vertical specimen stroke	60 mm(+1mm)
Specimen Orientation	XY-Axis: 8°
Convenient specimen holder:	
Specimen Size	Standard Max. 55 x 55 mm
Smooth fatigue free Hand wheel:	Smooth fatigue free Hand wheel:
Hand wheel Lock	Positive lock at 12 or 6 o'clock position
Knife Holder Base	
Displacement	Lateral Displacement
Adjustments	North-south Adjustment
Clamping Mechanism	Clockwise
Knife Holder	
Type of Knife used	Microtome Knives of size 100MM – 300MM
Disposable Blade	Can be used with our blade holder
Reverse Wheel	
Function	Trimming



An ISO 9001 : 2208 | ISO 14001 : 2008 | ISO 13485  
WHO: GMP Products | GLP Compliant Products

[www.acmasindia.com](http://www.acmasindia.com) | [www.acmasglobal.com](http://www.acmasglobal.com) | [www.test-chambers.com](http://www.test-chambers.com)

## **ACMAS** TECHNOLOGIES PVT. LTD.

### **CORPORATE OFFICE/ SHOWROOM (INDIA)**

Plot No. 352-353, Sector – 57  
Phase- IV Kundli, Sonapat, Haryana - 131028  
Land Line No.: +91 - 11- 47619688,  
Fax: +91-11-47619788  
E-mail.: [info@acmasindia.com](mailto:info@acmasindia.com)

### **SALES OFFICE (HONG KONG)**

Unit D 28 11/F Wing Tat Comm,Bidg 97, Bonham Strand East,  
Sheung Wan, Hong Kong (PRC)  
Tel.: 0086-13929598046 | 0086- 18922303099  
E-mail.: [hk@acmasindia.com](mailto:hk@acmasindia.com)

### **SALES OFFICE (RUSSIA)**

Inmed Trade Street Ozerkovsky Embankment,  
Unit No 50, Straine- 1, Off- 502, Moscow, Russia  
E-mail.: [info@acmasindia.com](mailto:info@acmasindia.com)  
Tel.: 0049- 79592345 | Email: [russia@acmasindia.com](mailto:russia@acmasindia.com)