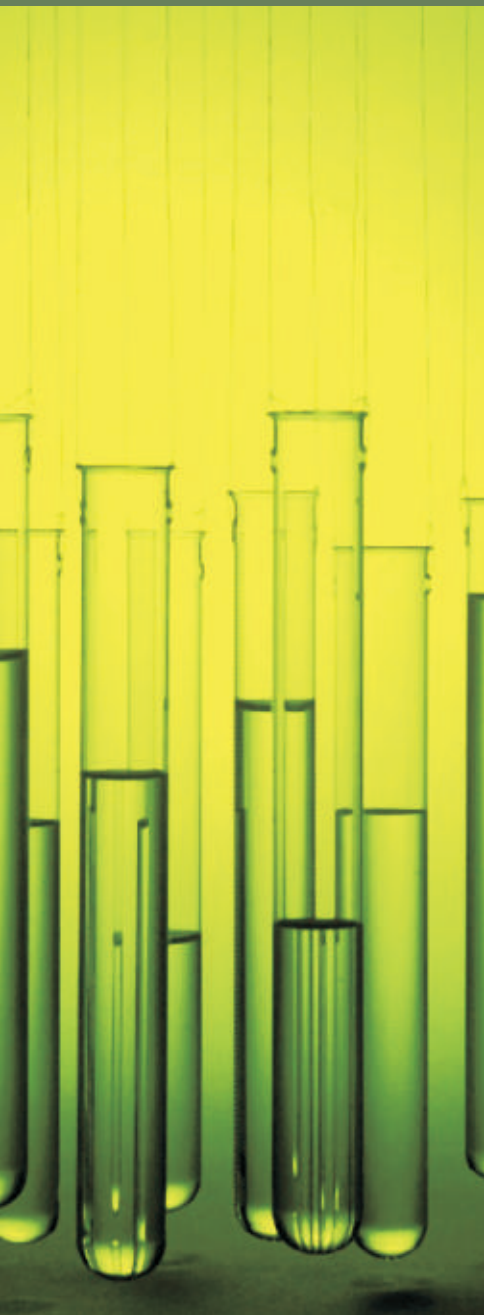
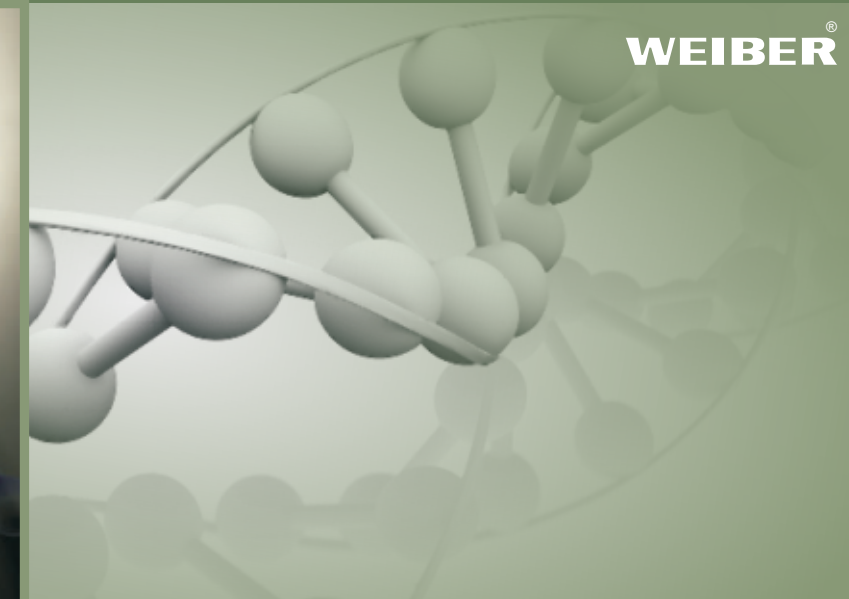
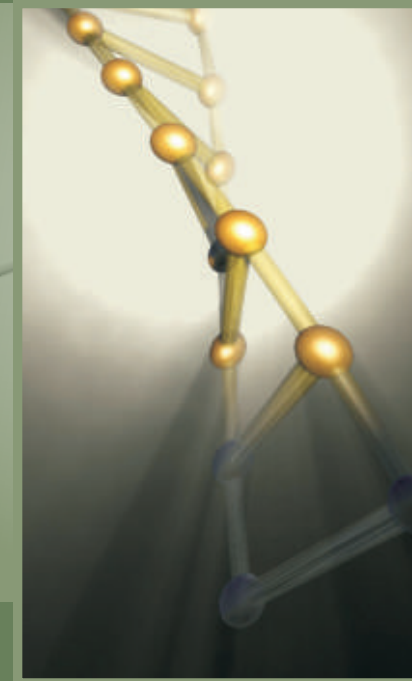


Fume Hood



Models:
Acm-42105-I



Fume Hood

Weiber Fume hood are designed to function as an enclosed ventilated workspace. Its purpose is to protect the operator from harmful fumes and vapors generated within the enclosure and from a fire or explosion as the result of an ignition. It performs these functions by capturing, containing and exhausting the fumes safely and efficiently out the enclosure and by utilizing the sliding safety glass sash as a shield for the operators face and body

Face Velocity

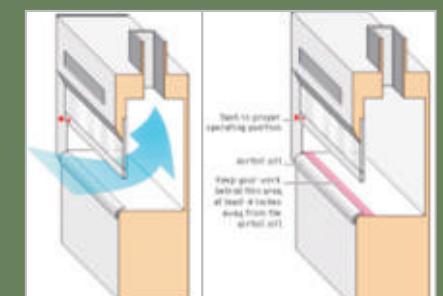
Variations of face velocity in single sided bench mount hoods does not exceed plus or minus 10% of the average target face velocity when tested in the manufacturers test facility with the sash in the full open position.

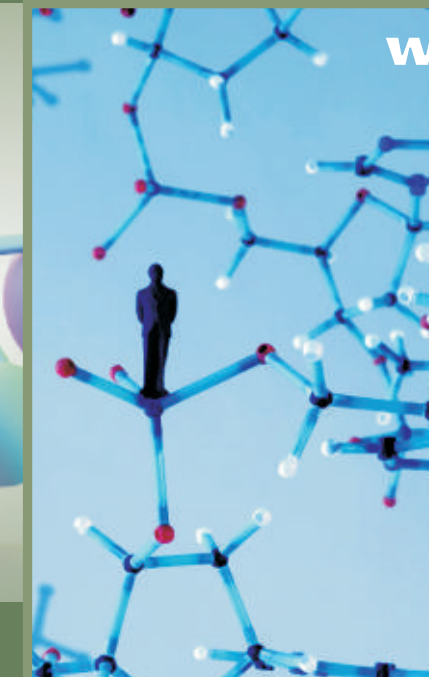
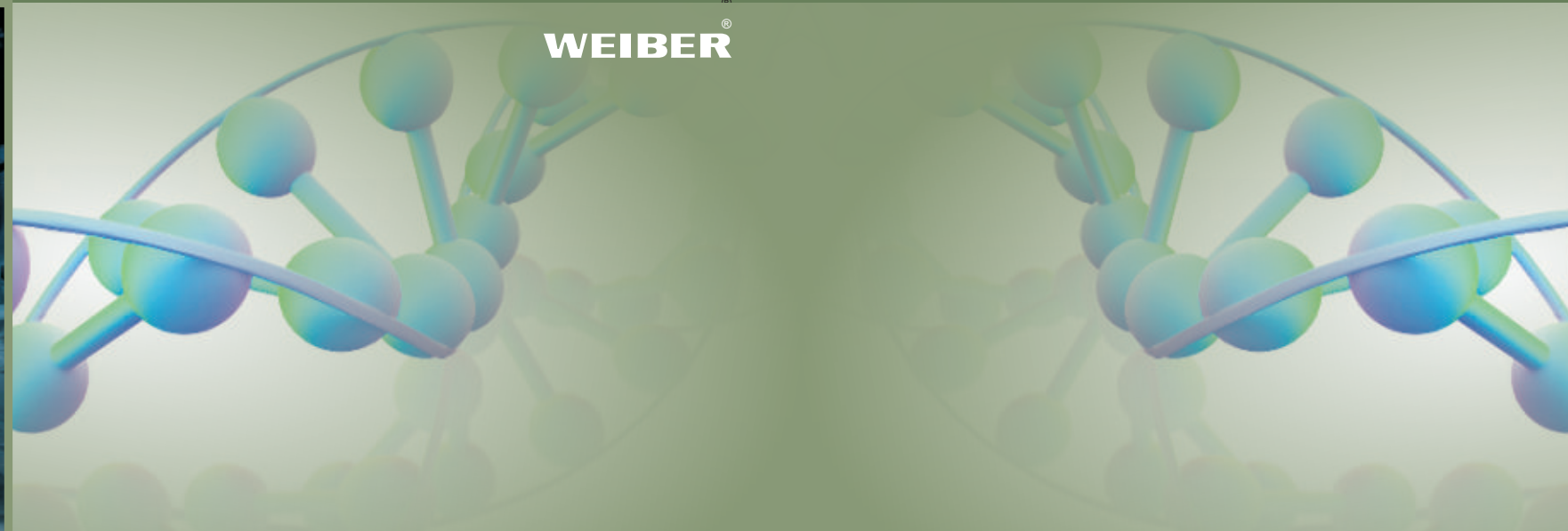
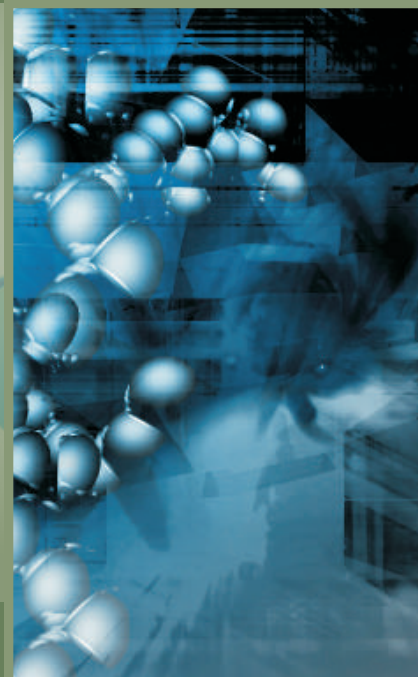
Containment Testing: Single sided bench mount fume hoods are performance tested to the ASHRAE 110 - 1995 Method of Testing Performance of Laboratory Fume Hoods and are capable of achieving an As Manufactured (AM) rating of better than 0.05 PPM at 4 liters per minute (4 AM 0.05) with

the vertically rising sash in the full open position. Walk-in fume hoods will be performance tested with the upper vertically rising sash in the full open position and the lower sash in the closed position.

Exhaust Volume

1. At any baffle position, fume hood are capable of maintaining a relatively constant exhaust volume. Maximum variation as a result of baffle adjustment shall not exceed 5% of the specified exhaust volume.
2. At any sash opening, from full open to 6" open, fume hood will be capable of maintaining a relatively constant





exhaust volume. Maximum variation as a result of sash position shall not exceed 5% of the specified exhaust volume.

Static Pressure: Weiber Fume hood are designed to minimize static pressure loss with sufficient baffle openings and a round bell mouthed stub duct. Average static pressure loss readings on standard bench mount fume hoods, taken at four points 90 degrees apart and three duct diameters above the fume hood shall not exceed the following when measured with sash in full open position and face velocity at 100 FPM:
75 FPM 0.25 inches 100 FPM 0.35 inches 125 FPM 0.60 inches

Noise Level

When measured on the A scale noise generated by the fume hood does not exceed 60dBA when measured 6" in front of the sash.

Illumination

Average illumination in the work area will be a minimum of 80 candles where the work area is defined as being from side to side, from back baffle to sash line and from work surface to a height of 30".

Electrical

All electrical fixtures are factory installed and pre-wired to a junction box on the roof of the fume hood superstructure. Weiber offers a wide range of FUME EXHAUST HODDS to suit every specific application of the user. The hood is fabricated from water proof commercial quality ply & block boards externally covered with industrial laminated sheets and interiors coated with epoxy paint over a suitable primer base. The inner walls of the working chamber is covered with epoxy coated asbestos or FRP

or HDPE lining or as required. The working table is made of acid proof glazed tiles and provided with gas/air petcocks and additional power points, diffused fluorescent tubes.

The front shutter is of shatter proof clear glass, framed in suitable wooden structure with vertically sliding facility and is connected with counter weight balancing arrangement.

The exhaust system consists of a dynamically balanced centrifugal impeller, made of PVC/FRP, directly coupled with a TEFC industrial motor of 1440 RPM 3 phase 415 V and control led by a DOL starter with systems ranges from 500 CFM to 1250 CFM or above as it is proportional to the dimensions of the hood.

Our Fume exhaust hoods are provided with suitable ducting of FRP or PVC material with required diameter and length as per the site conditions.

Our Fume exhaust hoods are also available with full FRP construction or combination of FRP and Ply, with or without work bench. We also design and manufacture Scrubbers, Fume Extraction & Dust Collection Systems.

Note: Our fume hoods are designed to be used for chemical reagents used typically for semiconductor processing, like, HF, H2SO4, HCl, HNO3, Bromine and organic materials like Trichloroethylene(TCE), Acetone, Ethanol, methanol, acetic acid etc



We are having **Representatives in 55 Countries**

please visit our

International Dealers Section

to contact your nearest **ACMAS** Representative



TECHNOLOGY with **HUMAN TOUCH**



An ISO 9001:2208 | ISO 14001:2008 | ISO 13485
WHO:GMP Products | GLP Compliant Products

www.acmasindia.com | www.scientificlaboratoryequipments.com | www.measuring-meters.com

ACMAS TECHNOCRACY PVT. LTD.

SALES OFFICE (INDIA)

312-313, Vardhman Capital Mall, L.S.C. 10, GulabiBagh, Delhi-110052, INDIA

Tel: 0091-11-23646703, 23643054

(M) +91-9313971681 | Email: india@acmasindia.com

SALES OFFICE (HONG KONG)

Unit D 28 11/f Wing Tat Comm, Bldg 97, Bonham Strand East, Sheung Wan, HONG KONG (PRC).

Tel: 0086-13929598046 | 0086-18922303099

Email: hk@acmasindia.com

SHOWROOM

141, Rai Industrial Estate, Rai, Sonapat, Haryana-131029, INDIA

Tel: 0091-0-9312219738 (M) +91-9717741167

Email: info@acmasindia.com

SALES OFFICE (RUSSIA)

Inmed Trade Street, Ozerkovsky Embankment, Unit No 50 Straine-1, Off-502, Moscow, RUSSIA

Tel: 0049-79592345 | Email: russia@acmasindia.com