

# VERTICAL AUTOCLAVE (Economy Model) Double Walled Cylindrical



**WEIBER**

Models:

- Acm-23098-TKS

## VERTICAL AUTOCLAVE (Economy Model) Double Walled Cylindrical



WEIBER

## VERTICAL AUTOCLAVE

### Introduction

Weiber is a name of quality and quick service, an asset to Hospitals, Pharmaceutical, Tissue culture, Bio-fertilizer Laboratories and research institutes with modest sterilizing needs, where contaminated objects require sterilization. Since last 25 years we have made its primary objectives to help fight the spread of infections, caused by pathogenic micro-organisms. We represent most innovative and advanced technologies in our products supported by our most efficient customer support network.

### Construction

The outer chamber is made of thick gauge Mild Steel while inner is made of 304 grade Stainless

Steel. Lid is made of Mild Steel with inside lined with S.S. for double protection. The unit has Radial Locking arrangement for the lid. Provided with built-in safety valve, pressure gauge, pressure release valve. Pressure is adjustable from 5 psi to 20 psi  $\pm$  3 psi. Supplied complete with cord, plug etc. To operate 220 volts single phase 50 cycles.

### Mode of Heating

Electrically heated by special flange type/immersion type heaters bearing ISI mark, to work on 220 volts single phase 50 cycles.

### Working Pressure

The pressure inside the chamber is variable from 5 psi. to 20 psi. But the normal

WEIBER

## VERTICAL AUTOCLAVE

recommended pressure for sterilization process is 1.2 kgf/cm sq.g ( 15 psi - 17 psi )

### Working Temperature

121°C / 134°C

### Hydrotest Pressure

2.5 kgf/cm sq.g ( 35 psi / 40 psi )

	DIA x HEIGHT	Capacity	LOAD
(a)	250 x 450 mm	22 ltrs	1.5 KW
(b)	300 x 500 mm	35 ltrs	2.0 KW
(c)	350 x 550 mm	50 ltrs	3.0 KW
(d)	400 x 600 mm	78 ltrs	4.0 KW
(e)	450 x 600 mm	98 ltrs	4.0 KW
(f)	550 x 750 mm	152 ltrs	5.0 KW

## VERTICAL AUTOCLAVE

### Standard Controls

1. Double safety radial locking arrangement.
2. Stainless steel steam release valve.
3. Spring loaded safety valve of stainless steel (grade SS-304)
4. Water inlet and water valves.
5. Water level indicating gauge glass with stainless steel guard.
6. Pressure gauge.
7. Electrical control box, fitted with toggle switch, indicating Neon lamps and steam release valve. Foot paddle lifting device.

### Optional Accessories (Basic)

1. Automatic Pressure Control Switch - This semi-automatic device controls the

pressure inside the chamber mechanically and cuts-off the current from the heating elements, when the desired/ set pressure value level is attained inside the chamber and restarts the mechanism once the pressure inside the chamber falls from the desired level.

2. Automatic low Water Cut-off Device - This device is a safety device which protects the heaters from running dry. This device ensures that the machine is automatically switched off in case the desired water level falls below the prescribed level.
3. Mechanical Timer with Alarm System - This is a semi-automatic device which is

WEIBER

WEIBER

## VERTICAL AUTOCLAVE

initiated once the pressure level inside the chamber reaches the desired value, it regulates the sterilization time of the media to be sterilized and when the desired time is passed, it activates the buzzer, which indicates that the sterilization cycle is complete and media can be extracted.

### Temperature Chart Recorder

These self-contained, easy-to-use recorders provide a permanent record of temperatures, using a precise, spiral-wound bi-metallic strip



transducer. All models include an on/off switch, locking door and built-in slot for an optional tie-down cable and lock. All include one "AA" battery, pen, starter box of 60 charts and manual. All come standard with one-point NIST traceable Certificate of Calibration.

### Microprocessor Based Programmable Temperature

Our digital Controllers offer high speed, high precision, and multiple I/O and use a 5-digit, 3-row LCD display for high visual clarity.



WEIBER

## VERTICAL AUTOCLAVE

### Universal Digital Data Recorder system Without Computer (Complete Unit)



**Data Carrier** - Zero powered. pocket size device- facilitates extraction of stored records for transportation to remote data reader.

**Data Recorder** - (6 channel) A sleek, tabletop device (data logger) - is provided with one input and two output ports. The input port reads data from the attached data carrier. The printer port facilitates direct hard copy record of the data from data carrier on 80/132-column dot matrix printer. The PC communication port (RS 232 C) facilitates downloading data from data carrier to PC.

**PC Software** - A user-friendly PC software package reviews and analyzes data and enables you to generate records and plot graphs in a variety of ways. (licensed software with hardware lock).

### Conversion to Fully Automatic PLC based System



WEIBER

## VERTICAL AUTOCLAVE

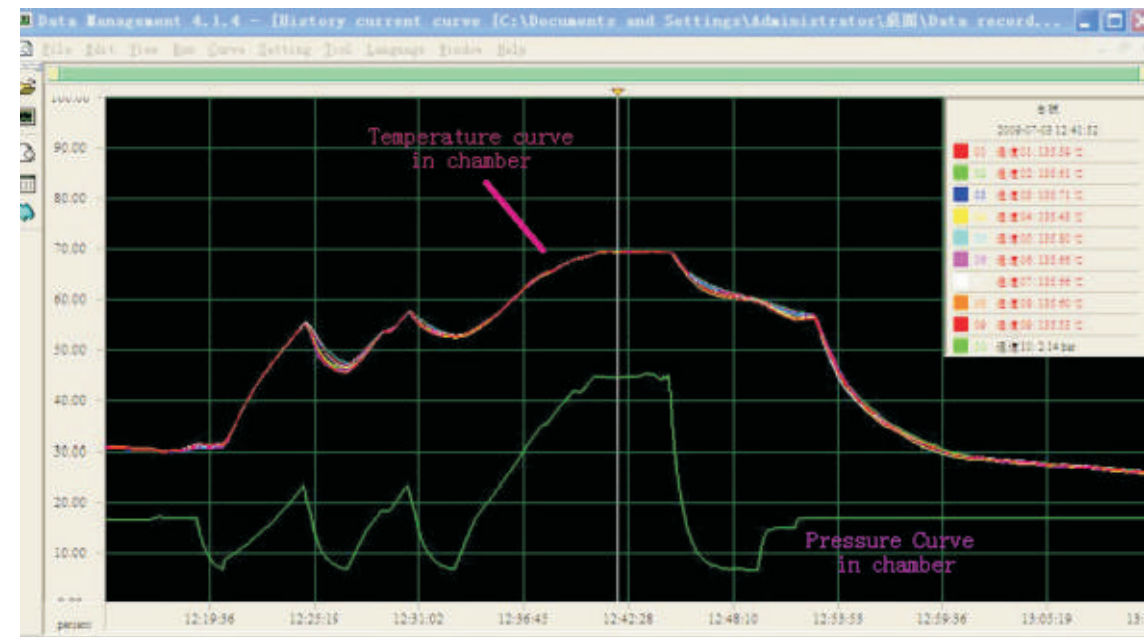
Cg100 Integrated PLC&HMI controller. 16 channel Digital Inputs, 12 Channel Digital outputs, 2 Analog Inputs, 1 Analog output, 1 High Speed Counter Input, 4x20 character LCD display, 6 programmable function keys, 10 numeric data keys, 5 navigation keys. CG100 can be programmed with Microsoft PLC editor program which runs under Windows versions. The IO capacity can be expanded via expansion modules. The modules include Digital inputs, Outputs, Analog inputs, outputs, PT100 sensor, Thermocouple inputs, Load cell inputs.

### Temperature Graph Representation

**Price:** This module can convert any model of the vertical autoclave into a fully automatic PLC-based sterilizer with advanced validation and data logging features with auto and customized program functions.

WEIBER

## VERTICAL AUTOCLAVE



WEIBER



We are having **Representatives in 55 Countries**

please visit our

**International Dealers Section**

to contact your nearest **ACMAS** Representative



**TECHNOLOGY** with **HUMAN TOUCH**



An ISO 9001:2208 | ISO 14001:2008 | ISO 13485  
WHO:GMP Products | GLP Compliant Products

[www.acmasindia.com](http://www.acmasindia.com) | [www.scientificlaboratoryequipments.com](http://www.scientificlaboratoryequipments.com) | [www.measuring-meters.com](http://www.measuring-meters.com)

## ACMAS TECHNOCRACY PVT. LTD.

### SALES OFFICE (INDIA)

312-313, Vardhman Capital Mall, L.S.C. 10, GulabiBagh, Delhi-110052, INDIA

Tel: 0091-11-23646703, 23643054

(M) +91-9313971681 | Email: [india@acmasindia.com](mailto:india@acmasindia.com)

### SALES OFFICE (HONG KONG)

Unit D 28 11/f Wing Tat Comm, Bldg 97, Bonham Strand East, Sheung Wan, HONG KONG (PRC).

Tel: 0086-13929598046 | 0086-18922303099

Email: [hk@acmasindia.com](mailto:hk@acmasindia.com)

### SHOWROOM

141, Rai Industrial Estate, Rai, Sonapat, Haryana-131029, INDIA

Tel: 0091-0-9312219738 (M) +91-9717741167

Email: [info@acmasindia.com](mailto:info@acmasindia.com)

### SALES OFFICE (RUSSIA)

Inmed Trade Street, Ozerkovsky Embankment, Unit No 50 Straine-1, Off-502, Moscow, RUSSIA

Tel: 0049-79592345 | Email: [russia@acmasindia.com](mailto:russia@acmasindia.com)