

PLC Based Fully Automatic Horizontal Autoclave (Rectangular)



Model : (Acm-32065- A)

PLC Based Fully Automatic Horizontal Autoclave (Rectangular)



Introduction

Weiber is the name of quality and quick service, an asset to Hospitals, Pharmaceutical, Tissue culture, Bio-fertilizer Laboratories and research institutes with modest sterilizing needs, where contaminated objects require sterilization. Since last 25 years we have made its primary objectives to help fight the spread of infections, caused by pathogenic micro-organisms. We represent most innovative and advanced technologies in our products supported by our most efficient customer support network.

PLC Based Fully Automatic Horizontal Autoclave (Rectangular)

Construction

The unit has outer chamber, inner Chamber, Boiler, Lid and Jacket - all made of 304 grade stainless Steel. For controlling sterilization cycle, a three way valve or a multi port valve - made of S.S. is provided. It is supplied complete with vacuum breaker, water level indicator, steam trap and automatic pressure control switch. The whole unit is mounted on a robust tubular stand. It is available in the following standard sizes. Operatable on 3 Phase, 440 Volts A.C. Supply.

Mode of Heating

Electrically heated by special flange type/immersion type heaters bearing ISI mark, to work on 440 volts three phase 50 cycles.

Working Pressure

The pressure inside the chamber is variable from 5 psi. to 20 psi. But the normal recommended pressure for sterilization process is 1.2 kgf/cm sq.g (15 psi - 17 psi)

PLC Based Fully Automatic Horizontal Autoclave (Rectangular)

Working Temperature : 121° C

Hydrotest Pressure : 2.5 kgf/cm sq.g (35 psi)



Model : (Acm-32065- A)

Standard Controls :	
Multiple Operating Valve	To carry out all functions of sterilization cycle at one point i.e. steam to jacket, steam to chamber, fast/ slow exhaust and vacuum/ drying.
Door	Single door shall be fitted with radical shooting arm, provided with automatic pressure locking device so that the door can not be opened till chamber pressure is fully exhausted.
Quick Vacuum Drying Apparatus	This Allows the filtered and sterilized air to break the chamber vacuum & helps in quick-drying.
Accidental Vacuum Breaker	A safety device so jacket against accidental vacuum in it and to remove residual air from it.
Safety Valve	A safety device against excess pressure in jacket and steam generator.
Dial Type Thermometer	Indicates sterilization temperature.
Plug Screen	A device to prevent chamber, discharge line from lint / sediment.
Chamber Condensate Line	Incorporated with spirax thermostatic steam trap and check valve for perfect condensation from chamber to achieve optimum temperature.
Pressure & Compound Gauge	Indicates jacket and chamber pressure / vacuum resp.
Steam Generator (Boiler)	Shall be attached to underneath the jacket. It shall be fitted with - <ol style="list-style-type: none">1. ISI marked water immersion type industrial heating elements.2. A magnetic automatic water level float switch to protect heater from low water level.3. Water inlet & outlet valves.4. Water level indicating gauge glass with SS guard and with automatic water closing device in case of breakage of glass tube.5. Automatic pressurestat switch to control the boiler/jacket pressure.
Electrical Control Box	Equipped with air break contractor of ' CUT. HAMM' make, toggle switch and two nos. indicating neon lamps.

Features Incorporated In Basic Unit

Automatic pressure control switch- This semi-automatic device controls the pressure inside the chamber mechanically and cuts-off the current from the heating elements, when the desired/ set pressure value level is attained inside the chamber and restarts the mechanism once the pressure inside the chamber falls from the desired level.

PLC Based Fully Automatic Horizontal Autoclave (Rectangular)

MICROPROCESSOR PLC CONTROL SYSTEM (WITH 8 SETTING PROGRAMS)

Fully Automatic PLC based System

CG100 Integrated PLC&HMI controller. 16 channel Digital Inputs, 12 Channel Digital outputs, 2 Analog Inputs, 1 Analog output, 1 High Speed Counter Input, 4x20 character LCD display, 6 programmable function keys, 10 numeric data keys, 5 navigation keys. CG100 can be programmed with Microsoft



ACMAS TECHNOCRACY PVT. LTD.

www.measuring-meters.com | www.acmasindia.com | www.scientificlaboratoryequipments.com



PLC editor program which runs under Windows versions. The IO capacity can expand via expansion modules. The modules Dig. inputs, Outputs, Analog inputs, outputs, PT100 sensor, Thermocouple inputs, Load cell inputs

The control system is based on 'state of art' microcomputer technology, guaranteeing high reliability and safe operation. The computerized control unit ensures a fully automatic operation throughout the entire cycle. No future intervention is necessary after selecting the parameters and pressing the start button. The main cycle phase and the machine's actual parameters are displayed on the LCD panel during the cycle progress.

PLC Based Fully Automatic Horizontal Autoclave (Rectangular)

The main physical parameters of the process, i.e, temperature, pressure, time and jacket pressure are controlled and displayed. The keyboard located on the front level enables the operator to select a program, start and stop the cycle, and allows a trained technician to preset the main parameters using an access code. The control system is easy to use and programmable. The control system is easy to use and programmable.

ACMAS TECHNOCRACY PVT. LTD.

www.measuring-meters.com | www.acmasindia.com | www.scientificlaboratoryequipments.com

For a clear and concise documentation of cycle process the control unit is provided with a dot matrix printer, which is connected to the microprocessor. The printer generator a hand copy of the printout of the relevant information concerning the cycle operation such as the temperature, pressure, vacuum, sterilization and drying time, number of cycles/number of pulsing etc. In case of the failure (optional) an additional graphic printer is optional.

The until is fitted with all standard accessories.

WIDTH x HEIGHT x DEPTH
(a) 450 x 450 x 900 mm
(b) 450 x 600 x 900 mm
(c) 600 x 600 x 900 mm
(d) 600 x 600 x 1200 mm
(e) 600 x 750 x 1200 mm
(f) 600 x 900 x 1500 mm

PLC Based Fully Automatic Horizontal Autoclave (Rectangular)

The sterilizer is designed to operate up to (6) six standard sterilization programs between 105oC and 137oC and (2) two test programs optional. All programs are selected by using the numeric keypad, and all programs are programmable. Air removal, sterilization and drying stages can be programmed easily.



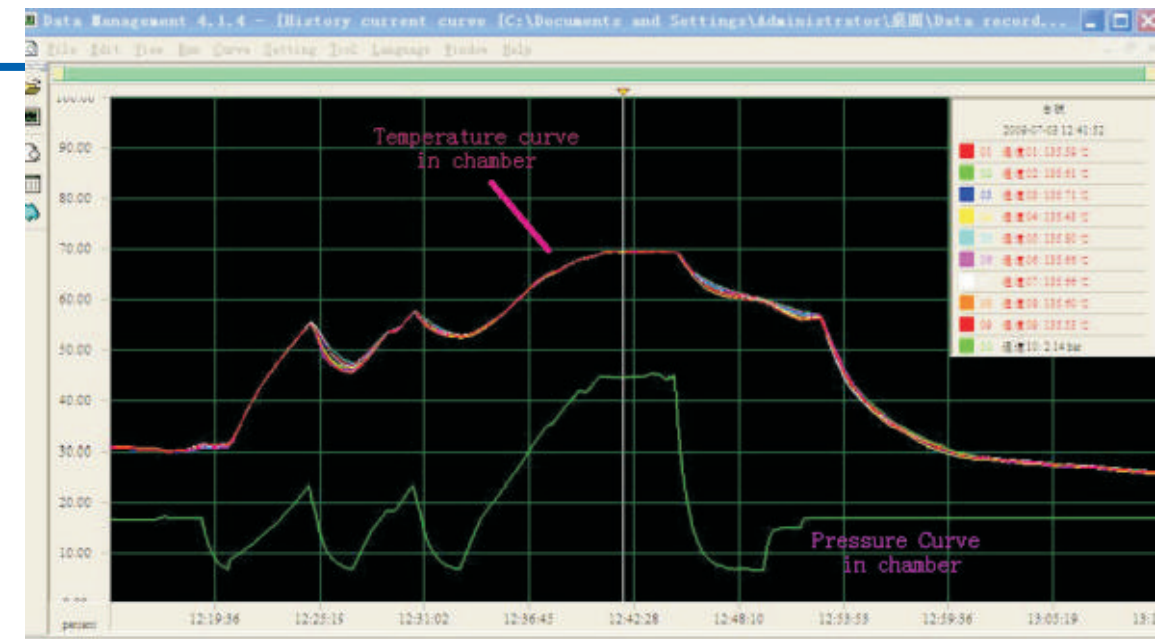
Model : (Acm-32065- A)



Model : (Acm-32065- A)



Temperature Graph Representation





We are having **Representatives in 55 Countries**

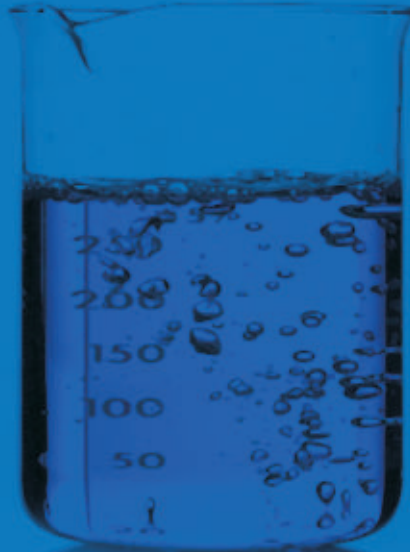
please visit our

International Dealers Section

to contact your nearest **ACMAS** Representative



TECHNOLOGY with **HUMAN TOUCH**



An ISO 9001:2208 | ISO 14001:2008 | ISO 13485
WHO:GMP Products | GLP Compliant Products

www.acmasindia.com | www.scientificlaboratoryequipments.com | www.measuring-meters.com

ACMAS TECHNOCRACY PVT. LTD.

SALES OFFICE (INDIA)

312-313, Vardhman Capital Mall, L.S.C. 10, GulabiBagh, Delhi-110052, INDIA

Tel: 0091-11-23646703, 23643054

(M) +91-9313971681 | Email: india@acmasindia.com

SALES OFFICE (HONG KONG)

Unit D 28 11/f Wing Tat Comm, Bldg 97, Bonham Strand East, Sheung Wan, HONG KONG (PRC).

Tel: 0086-13929598046 | 0086-18922303099

Email: hk@acmasindia.com

SHOWROOM

141, Rai Industrial Estate, Rai, Sonapat, Haryana-131029, INDIA

Tel: 0091-0-9312219738 (M) +91-9717741167

Email: info@acmasindia.com

SALES OFFICE (RUSSIA)

Inmed Trade Street, Ozerkovsky Embankment, Unit No 50 Straine-1, Off-502, Moscow, RUSSIA

Tel: 0049-79592345 | Email: russia@acmasindia.com